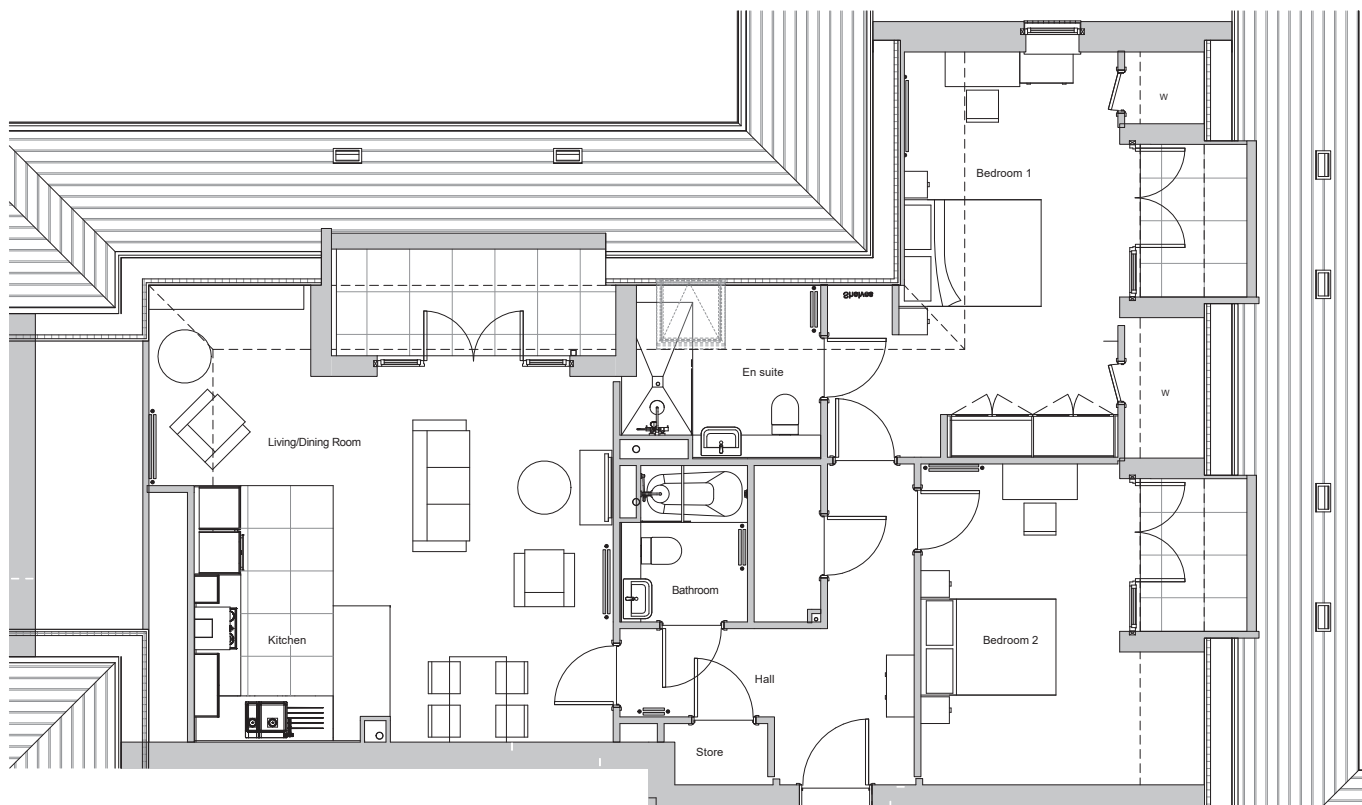
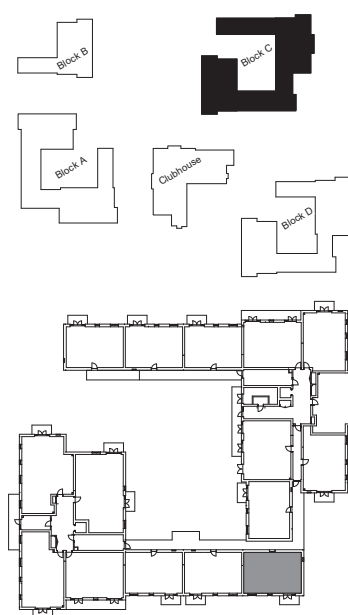


Audley Wycliffe Park

38 Watercroft Place (C38)
Second Floor Apartment
Plot 97



Internal Measurements	Metric (m)	Imperial (ft)
Bedroom 1	5.70 x 3.03	18'8" x 9'11"
Bedroom 2	4.51 x 2.80	14'10" x 9'2"
Kitchen	3.61 x 2.75	11'10" x 9'0"
Living/Dining Room	5.15 x 3.13	16'11" x 10'3"
Services	0.86 x 1.31	2'10" x 4'3"
Terrace	2.20 x 0.94	7'3" x 3'1"
Terrace	2.15 x 1.50	7'1" x 4'11"
Terrace	1.50 x 4.00	4'11" x 13'1"



Audley Wycliffe Park
Bigmore Lane, Horsleys Green,
Buckinghamshire HP14 3XL
01494 324 966
www.audleyvillages.co.uk

These floor plans are illustrative and for marketing purposes only. Furniture shown to illustrate possible room layouts and not included within the sale. Designs vary according to plot. All details should be checked at the Sales Office.

A: 10 November 2021 C: 220501



Audley Wycliffe Park

2 bedroom, second floor apartment



Property highlights

- Second floor/penthouse apartment with lift access
- Open plan kitchen/dining room with private balcony
- Nobilia kitchen with integrated Neff appliances
- Fitted wardrobes and en suite shower room in the dual-aspect main bedroom
- South-east facing balconies in both the main bedroom and second bedroom
- Guest bathroom with Villeroy & Boch sanitaryware
- Additional storage in the hallway and bedroom eaves



Audley Wycliffe Park
Bigmore Lane, Horsleys Green,
Buckinghamshire HP14 3XL
01494 324 966
www.audleyvillages.co.uk

CGIs & Photos for illustration purposes only

